

## TECHNICAL DATA

# VOLTEX DS®

## BENTONITE GEOTEXTILE WATERPROOFING WITH INTEGRATED POLYETHYLENE LINER

**A. R. Chambers Supply**  
**111 Thirty-Fifth Street**  
**Pittsburgh, PA 15201-1993**  
**412-681-8955**

### DESCRIPTION

Voltex DS is a highly effective waterproofing composite of high strength geotextiles, 1.10 pounds of sodium bentonite per square foot, and an integrally bonded polyethylene liner. The high swelling, low permeable sodium bentonite is encapsulated between the two geotextiles. A proprietary needlepunch process interlocks the geotextiles together forming an extremely strong composite that maintains the equal coverage of bentonite, as well as, protects it from inclement weather and construction related damage. Once backfilled, Voltex DS hydrates and forms a monolithic waterproofing membrane. Voltex DS contains zero VOC, can be installed in almost any weather condition to green concrete, and most importantly, has proven effective on both new and remedial waterproofing projects worldwide.

Voltex DS works by forming a low permeability membrane upon contact with water. When wetted, unconfined bentonite can swell up to 15 times its dry volume. When confined under pressure the swell is controlled, forming a dense, impervious waterproofing membrane. The swelling action of Voltex DS can self-seal small concrete cracks caused by ground settlement, concrete shrinkage, or seismic action. Voltex DS forms a strong mechanical bond to concrete when the geotextile fibers are encapsulated into the surface of cast-in-place concrete.

### APPLICATIONS

Voltex DS is designed for below-grade structural foundation surfaces. Typical cast-in-place concrete applications include backfilled concrete walls, earth-covered roofs, structural slabs, tunnels, and property line construction. Property line construction applications include soldier pile and lagging, metal sheet piling, shotcrete and stabilized earth retention walls. Applications may include structures under continuous or intermittent hydrostatic pressure.

Where contaminated ground-water or salt-water conditions exist, use Voltex DSCR with contaminant resistant sodium bentonite. Voltex DSCR resists higher levels of the following contaminant's: nitrates, phosphates, chlorides, sulfates, lime and organic solvents.

### INSTALLATION

**General:** Installation guidelines herein are for cast-in-place concrete applications. For shotcrete, precast concrete, and other applications not covered herein, refer to specific Voltex DS literature or contact CETCO for applicable installation guidelines. Install Voltex DS in strict accordance with the manufacturer's installation guidelines using accessory products as required. Also, use Voltex DSCR as required for contaminated conditions. Install Voltex DS with the dark gray (woven) geotextile toward the concrete to be waterproofed. Install Waterstop-RX in all applicable horizontal and vertical concrete construction joints. Schedule waterproofing material installation to permit prompt placement of concrete or compacted backfill. **STORAGE:** Keep Voltex DS and all accessory products dry prior to backfill or concrete placement.

#### Preparatory Work:

**Under Slab:** Substrate should be smooth and compacted to a minimum of 85% Modified Proctor density.

**Concrete Walls:** Concrete should be free of voids and projections. Surface irregularities should be removed before installation. Apply Bentoseal to form-tie pockets, construction joints and honeycombs. Tapered form-tie holes extending through the wall should be completely filled with non-shrink grout and a piece of Waterstop-RX centered in the wall. **Property Line Shoring Walls:** Install Voltex DS only after proper substrate preparation has been completed and is suitable to receive the waterproofing.

### UNDER CONCRETE FLOOR SLABS

Voltex DS is recommended for use under structural reinforced concrete slabs 4" (100 mm) thick or greater on a compacted earth/gravel substrate. A minimum 6" (150 mm) thick reinforced slab, if installed over a mud slab. Where hydrostatic conditions exist, install Voltex DS under footings and grade beams.

Place Voltex DS over the properly prepared substrate with the dark gray (woven) geotextile side up. Overlap all adjoining edges a minimum 4" (100 mm) and stagger sheet ends a minimum 12" (300 mm). Staple or nail edges together as required to prevent any displacement before and during concrete placement.

Cut Voltex DS to closely fit around penetrations and pile caps. Install Waterstoppage under cut Voltex DS edge at detailing and then apply a minimum 3/4" (18 mm) thick fillet of Bentoseal to top of cut Voltex DS edge at penetrations, pile caps, grade beams, and other detailing. Extend Bentoseal onto Voltex DS and detail a minimum of 2" (50 mm). For hydrostatic conditions, Voltex DS should be installed under grade beams and footings. Extend Voltex DS onto footing a minimum 6" (150 mm) when required to tie into vertical wall waterproofing.

Where property line retaining walls, such as soldier pile and lagging, are used as the outside concrete form, install a Voltex DS transition course at the base of the wall per "Shoring Wall Transition" instructions within the "Property Line Construction" section herein. Continue the underslab Voltex DS installation to the retaining wall overlapping the transition course a minimum 12" (300 mm).

### BACKFILLED CAST-IN-PLACE CONSTRUCTION

Before installing the first course of Voltex DS, place Hydrobar Tubes® at the wall/footing transition corner. Butt the ends of Hydrobar Tubes together to form a continuous line.

# VOLTEX DS

## BENTONITE GEOTEXTILE WATERPROOFING WITH INTEGRATED POLYETHYLENE LINER

Beginning at the bottom corner of the wall, install Voltex DS horizontally oriented with 5-ft. (1.5 m) on one wall and the remainder around the corner on the other wall surface. Cut the bottom edge of Voltex DS at the corner a minimum of 6" (150 mm) so that Voltex DS can be extended onto the footing. Fasten Voltex DS into position with washer headed fasteners a maximum of 24" (600 mm) on center. Then cut and install a Voltex DS section over the uncovered footing corner area. Apply Bentoseal at the Voltex DS section to Voltex DS overlap at the corner.

Install adjacent Voltex DS rolls of the bottom course horizontally oriented. Each roll should overlap the preceding roll a minimum 4" (100 mm) and should extend onto the footing a minimum 6" (150 mm). At inside wall corners apply a continuous 3/4" (18 mm) fillet of Bentoseal directly in the corner prior to installing Voltex DS. Stagger all vertical overlap joints a minimum of 12" (300 mm). For hydrostatic conditions, the vertical wall Voltex DS should cover the entire footing and overlap the underslab waterproofing a minimum 6" (150 mm). Tape all Voltex DS membrane overlap seams with CETCO Seamtape.

Cut Voltex DS to closely fit around penetrations. After installing Voltex DS, trowel a minimum 3/4" (18 mm) thick fillet of Bentoseal around the penetrations to completely fill any space between the penetration and the Voltex DS edge. Extend Bentoseal onto the penetration and over the Voltex DS edge 1-1/2" (38 mm). In areas where multiple penetrations are close together, it may be impractical to cut Voltex DS to fit around each penetration. Therefore, apply a 3/4" (18 mm) thick fillet of Bentoseal around base of each penetration and cover the entire area between the penetrations. Extend Bentoseal 1-1/2" (38 mm) onto the penetrations.

Terminate Voltex DS membrane 12" (300 mm) below finished grade elevation with washer-head fasteners maximum 12" (300 mm) on center. Install GF-40SA flashing to primed concrete substrate with bottom edge overlapping top edge of Voltex DS membrane minimum 4" (100 mm). Overlap all roll ends a minimum 4" (100 mm) to form a continuous flashing. Height of flashing shall be per project details and specifications. Install a rigid termination bar along top edge of GF-40SA; fastened maximum 12" (300 mm) on center.

Complete grade termination detail with tooled bead of CETSEAL along the top edge, at all penetrations through the flashing, and all exposed overlap seams. Backfill shall be placed and compacted to minimum 85% Modified Proctor density promptly after waterproofing installation. Backfill should consist of compactable soil or angular aggregate (3/4" or less) free of debris, sharp objects, and stones larger than 3/4" (18 mm).

**NOTE:** Voltex DS is not recommended for masonry block walls. Contact CETCO regarding products and installation guidelines for masonry block foundation walls.

### PROPERTY LINE CAST-IN-PLACE CONSTRUCTION

Use Voltex DS to waterproof various types of cast-in-place property line construction, including: metal sheet piling, soldier pile and lagging, auger cast caisson, and stabilized-earth shoring walls. Following guidelines outline the installation of Voltex DS on soldier pile and lagging walls. For other property line shoring wall applications refer to the "Voltex DS Cast-In-Place Product Manual" or consult CETCO. For Shotcrete applications refer to the "Voltex DS Shotcrete Application Manual" for installation guidelines.

**Lagging Wall Preparation:** Remove all projections and fill all voids in the retaining wall larger than 1" (25 mm) with non-shrink grout or compacted soil. Aquadrain® drainage composite can be installed over lagging gaps up to 2-1/2" (63 mm) to provide a uniform surface to mount the Voltex DS. Gaps larger than 2-1/2" (63 mm) should be completely filled with grout, wood, extruded polystyrene (40 psi min.) or compacted soil even if Aquadrain is installed prior to Voltex DS. Do not use plywood or other surface treatment that leaves the lagging gaps void.

**Shoring Wall Transition:** At base of shoring wall, install Voltex DS sheet horizontally oriented (dark gray woven geotextile facing installer) with the bottom edge extending out onto the horizontal substrate a minimum 12" (300 mm) and the top edge of the sheet extending a min. 12" (300 mm) above the finished slab elevation. Secure Voltex DS sheet to shoring wall with washerhead fasteners maximum 24" (600 mm) on center. Overlap edges of Voltex DS sheets a minimum 4" (100 mm). If the slab thickness is greater than 24"

(600 mm), install a second full sheet or cut strip of Voltex DS on the shoring wall to meet the 12" (300 mm) requirement above of the top slab elevation. Overlap top edge of previous sheet and edges of adjacent sheets a min. 4" (100 mm).

**Shoring Wall Installation:** Starting at the base corner, install course of Voltex DS (horizontally oriented) to lagging wall over the previously installed corner transition sheet; with the bottom edge extending down to the wall/slab transition. Secure sheet edges to shoring wall with washer-head fasteners maximum 24" (600 mm) on center. After the bottom horizontal course, Voltex DS sheets can be installed either vertically or horizontally oriented. Continue Voltex DS installation up wall to finished grade elevation overlapping adjacent Voltex DS sheet edges a minimum 4" (100 mm) and staggering all sheet roll ends of adjacent courses a minimum 12" (300 mm). Do not allow Voltex DS overlap joints to run at same elevation as the concrete pour lift joints; extend membrane past a minimum 6" (150 mm).

Prior to installing Voltex DS at grade, install 1/2" (12 mm) thick cementitious wall board (Durock) centered over metal soldier pile from finished grade elevation to specified depth of soldier pile and lagging removal. Remove cement wall board during excavation to terminate system at grade.

**Tie-Back Heads:** Select appropriate size TB-Boot to fit over tie-back plate and allow proper cast-in-place concrete coverage per project requirements. TB-Boot should fit over entire tie-back head without the tie-back plate or cables in direct contact with the TB-Boot. Prior to TB-Boot installation, fill voids in retention wall substrate and tie-back head assembly with spray foam (min 20 psi) or non-shrink grout. For non-hydrostatic conditions, install and secure Aquadrain drainage composite course per manufacturer's guidelines to soil retention wall prior to installing TB-Boot. For hydrostatic conditions, install TB-Boot prior to Voltex DS membrane. With soldier piles, strip piles with waterproofing membrane prior to TB-Boot placement.

Fill pre-formed shape of TB-Boot with 2-part urethane spray foam (min 20 PSI) and place over tie-back head before foam sets up. Secure TB-Boot to soil retention system using washer head fasteners along the outside edge of the flat base. Apply ¼" (6 mm) thick by minimum 3" (75 mm) wide continuous ring of Bentoseal onto the flat base just outside of the ½" (12 mm) raised collar. Install 4-ft by 4-ft piece of Voltex DS (with pre-cut hole in center to fit tight around the 1/2" (12 mm) raised collar) over the entire flat base with outside edges fastened to the retaining wall. Secure inside Voltex DS edge around raised collar with washer-head fasteners that pass through the Bentoseal ring; typical fastener spacing 6" (150 mm). Do not install fasteners or puncture TB-Boot inside of the 1/2" (12 mm) raised collar. Apply counter flashing of Bentoseal along Voltex DS sheet edge around raised collar. Then install Voltex DS field sheet overlapping outer membrane edge minimum 4" (100 mm).

**Penetrations:** Install a cut collar of Voltex DS tightly around the penetration; extending a minimum 12" (300 mm) radius. Apply Bentoseal over Voltex DS collar around penetration; extending Bentoseal a minimum 3" (75 mm) radius at ¼" (6 mm) thickness. Then install main course of Voltex DS membrane tightly around the penetration. Finally, detail around penetration with ¾" (18 mm) thick cant of Bentoseal. With sleeved pipes, Division 3 work should include filling the gap between the pipe and the sleeve with non-shrink cementitious grout and install Waterstop-RX to both sides of sleeve.

**Soldier Pile Stripping:** Install a strip of Voltex DS over all soldier piles with raised lagging hanger bolts, form tie rods, or other irregular surface. Voltex DS strip should extend a minimum 6" (150 mm) to both sides of the piling. Apply Bentoseal 1/4" x 2" (6 mm x 50 mm) to Voltex DS strip surface along both edges of each soldier pile.

**Cementitious Board:** Prior to installing Voltex DS to finished grade detail, install ½" (12 mm) thick cementitious wall board centered over steel soldier pile from finished grade elevation to specified depth that the top of steel soldier pile and lagging will be removed.

**Grade Termination:** Terminate Voltex DS membrane 12" (300 Mm) below finished grade elevation with washer-head fasteners maximum 12" (300 mm) on center. Install GF-40SA flashing to primed concrete substrate with bottom edge overlapping top edge of Voltex DS membrane minimum 4" (100 mm). Overlap all roll ends a minimum 4" (100 mm) to form a continuous flashing. Height of flashing shall be per project details and specifications. Install a rigid termination bar along top edge of GF-40SA; fastened maximum 12" (300 mm) on center. Complete grade termination detail with tooled bead of CETSEAL along the top edge, at all penetrations through the flashing, and all exposed overlap seams.

Where lagging timbers and the top of steel soldier piles are removed, repair any waterproofing damaged by the excavation and removal of the retention wall system. Secure all excavated Voltex DS overlap seams with washer-head fasteners maximum 24" (600 mm) on center and then install Seamtape centered along overlap seams. Backfill shall be placed and compacted to minimum 85% Modified Proctor density promptly after waterproofing installation. Backfill should consist of compactable soil or angular aggregate (¾" or less) free of debris, sharp objects, and stones larger than ¾" (18 mm).

## LIMITATIONS

Voltex DS should only be installed after substrate preparation has been properly completed and is suitable to receive the waterproofing system. Concrete work should be cast-in-place with conventional forms that produce a smooth surface. Do not use stay-in-place concrete forming; use removable forming products only.

Voltex DS is designed for below-grade waterproofing applications where the product is properly confined. Voltex DS should not be installed in standing water or over ice. If ground water contains strong acids, alkalis, or is of a conductivity of 2,500 µmhos/cm or greater, water samples should be submitted to the manufacturer for compatibility testing. Ultra-seal may be required if contaminated ground water or saltwater conditions exist.

Voltex DS is designed for use under reinforced concrete slabs 4" (100 mm) thick or greater on a compacted earth/gravel substrate. Voltex DS requires a minimum 6" (150

mm) thick reinforced concrete slab if installed over a mud slab. Voltex DS is not designed for split-slab plaza deck construction.

**Voltex DS is not designed to waterproof expansion joints. Expansion joints are the responsibility of others. Do not use Voltex DS on masonry block foundation walls. Consult CETCO for special installation guidelines that apply to shotcrete and precast concrete construction.**

Voltex DS installation guidelines contained herein are for cast-in-place concrete applications and do not cover shotcrete or precast concrete applications. Refer to Voltex DS Product Manuals for additional property line shoring wall construction technique applications. Consult CETCO for applicable products and installation guidelines for applications not covered herein.

## SIZE AND PACKAGING

Voltex DS is available in 4-ft x 14.5-ft (1.2 x 4.2 m) rolls. Typical roll weight is approximately 68 lbs. (30.8 kg). Voltex DS is packaged 35 rolls per pallet (2,030 sq. ft. (188 sq. m.)).

## ACCESSORY PRODUCTS

Install Voltex DS using accessory products in strict accordance with the manufacturer's installation guidelines and details. Primary accessory products include Bentoseal®, Hydrobar Tubes®, Waterstoppage®, TB-Boot®, CETSEAL, Seamtape and GF-40SA grade flashing.

## ASSOCIATED SYSTEM PRODUCTS

Aquadrain® subsurface drainage composite and Waterstop-RX® expanding concrete joint waterstop.

**IMPORTANT NOTICE:** CONTACT CETCO FOR VERIFICATION OF SPECIFICATION AND INSTALLATION REQUIREMENTS TO COMPLY WITH ISSUANCE FOR ELIGIBILITY OF HYDROSHIELD WARRANTY

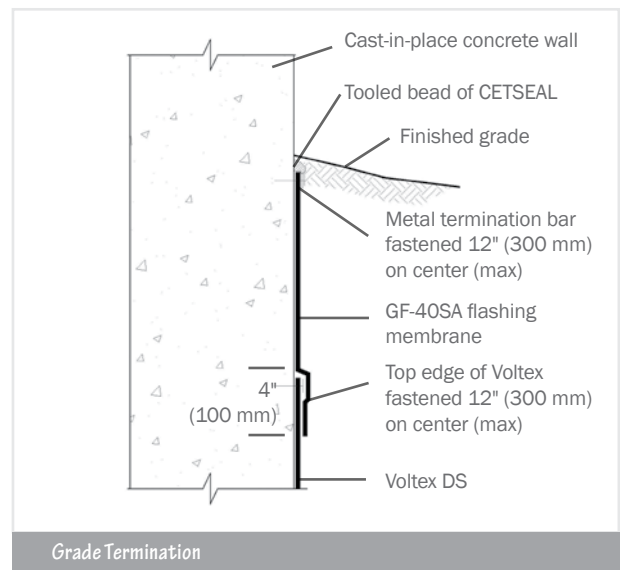
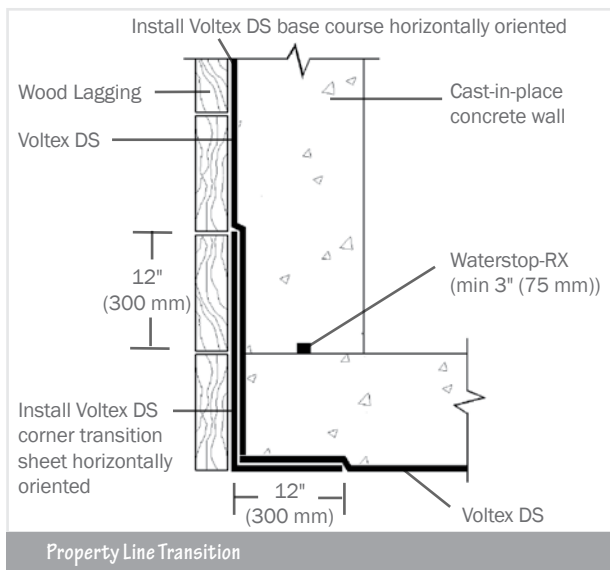
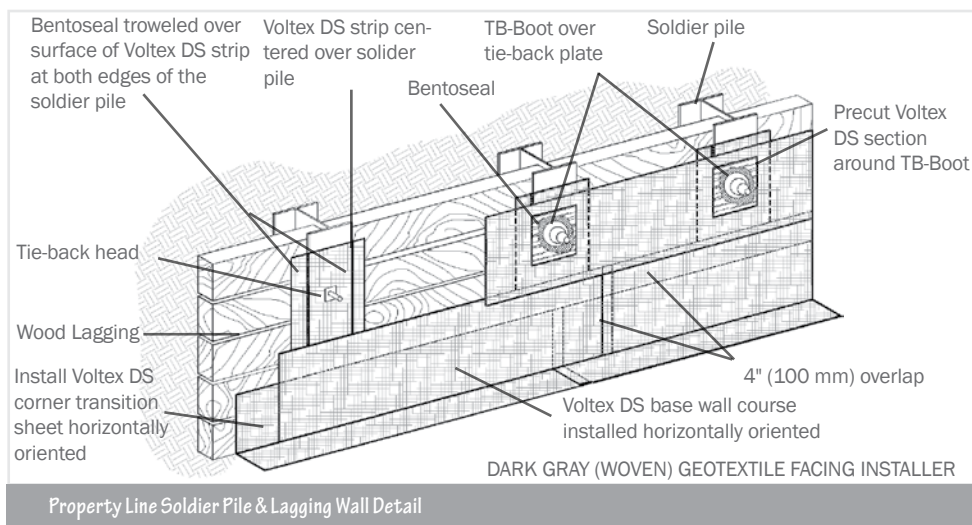


[www.CETCO.com](http://www.CETCO.com)

# VOLTEX DS

## BENTONITE GEOTEXTILE WATERPROOFING WITH INTEGRATED POLYETHYLENE LINER

TECHNICAL DATA		
PROPERTY	TEST METHOD	TYPICAL VALUE
Bentonite Mass Per Unit Area	ASTM D 3776 (mod.)	1.10 lbs/sq ft
Peel Adhesion to Concrete	ASTM D 903 (mod.)	15 lbs/in (2.6kN/m min)
Hydrostatic Pressure Resistance	ASTM D 5385 (mod.)	231 ft (70 m)
Permeability	ASTM D 5084	1 x 10 <sup>-10</sup> cm/sec
Grab Tensile Strength	ASTM D 4632	120 lbs (530 N)
Puncture Resistance	ASTM D 4833	140 lbs (620 N)
Low Temperature Flexibility	ASTM D 1970	Unaffected @ -25° F (-32° C)
Water Vapor Transmission Rate	ASTM E 96	0.03 grains per hour/ft <sup>2</sup>



**SEPTEMBER 2010**

*IMPORTANT: The information contained herein supersedes all previous printed versions, and is believed to be accurate and reliable. For the most up-to-date information, please visit [www.CETCO.com](http://www.CETCO.com). CETCO accepts no responsibility for the results obtained through application of this product. CETCO reserves the right to update information without notice.*



[www.CETCO.com](http://www.CETCO.com)  
 2870 Forbs Avenue Hoffman Estates, IL 60192  
 847.851.1800 | 800.527.9948