

# RENTAL STAMPS

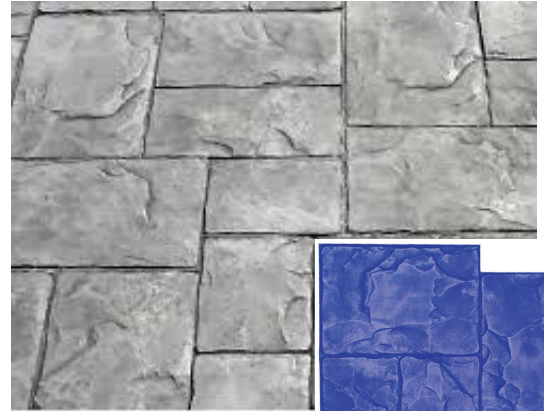
www.archambers.com



## CALL FOR PRICING

### Ashlar Cut Slate

23.125" x 23.125" (58.74 x 58.74 cm) Red, Yellow, and Blue  
A naturally laminated stone texture, split along parallel planes, hand-tooled to create a more pronounced chipped, fragmented texture with small, deep joints. Can be used with BRICKFORM Stampable Overlay



### Large Ashlar Cut Slate

Similar to Ashlar Cut Slate but the overall size is larger, with softer texture.

28" x 28"

Red, Yellow and Blue



### Classic Wood

Combining multiple wood grains to offer a bold, pronounced, exposed grain texture with six-inch wide planks.

81.5" x 21.75"

Blue



### Random Stone

29.125" x 29.125" (73.97 x 73.97 cm)

Red, Yellow, and Blue

Heavily textured random fieldstones

S/O Can be used with BRICKFORM Stampable Overlay



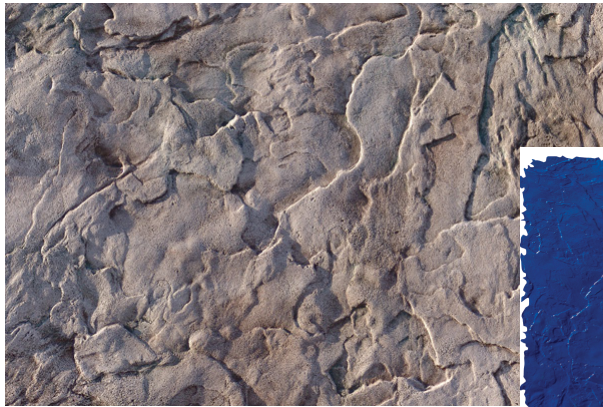
412-681-8955  
412-681-8499 fax

111 Thirty-Fifth Street  
Pittsburgh, PA 15201



# RENTAL STAMPS

www.archambers.com



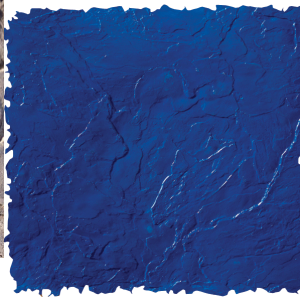
## Proline Roman Slate

Seamless Texture - available in 3 sizes

50" x 56"

45" x 45"

33" x 33"



## Brickform Blue Stone, FM-800

36" x 36"

Blue



## London Cobble

17" x 29.75" (43.18 x 75.56 cm) Blue

Also Available:

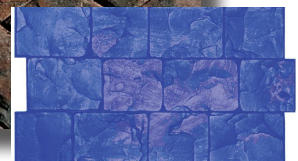
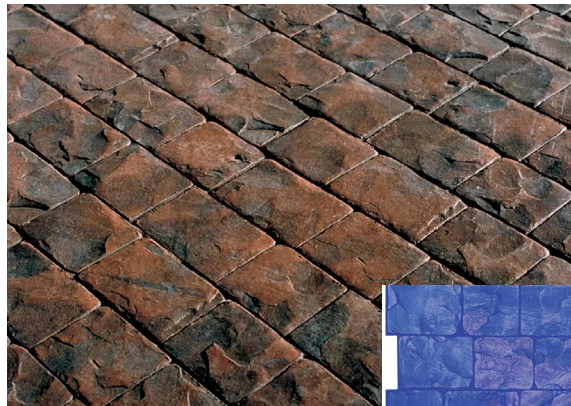
FM-560 London Cobble Strip - Blue

5.75" x 28.625" (14.605 x 72.71 cm)

A traditional, lightly textured cobblestone pattern

S/O Can be used with BRICKFORM Stampable

Overlay



412-681-8955  
412-681-8499 fax

111 Thirty-Fifth Street  
Pittsburgh, PA 15201

